

SeaPerformer Data Monitor Version 1.9 Release Note

SeaPerformer Data Monitor Version 1.9 Release Note

DOCUMENT VERSION 1.0 / 2021-10-07

Main features included in SeaPerformer Data Monitor version 1.9

1. Operational modes	3
2. Speed profile graph.....	4
3. Route planner – fuel consumption prediction and ETA change	4
4. Changes in data representation on the graphs.....	5
5. New SECA around Iceland.....	6
6. Menu changes	6
7. Troubleshooting	7
<i>Chrome browser</i>	<i>7</i>
<i>Firefox browser.....</i>	<i>8</i>

1. Operational modes

SeaPerformer enables now operational modes for filtering of the signals on the graphs. We've defined a number of ship specific modes that the vessels are operating in – e.g. Underway, Stopped, At anchor, Dynamic Positioning. New operational modes may be added in a future if needed. For these modes we've selected specific signals and limit values that are indicating that vessel is in one or multiple of the operational modes. The users can now filter the values on graphs depending of the state of one of the modes or combination of them.

Custom Filters

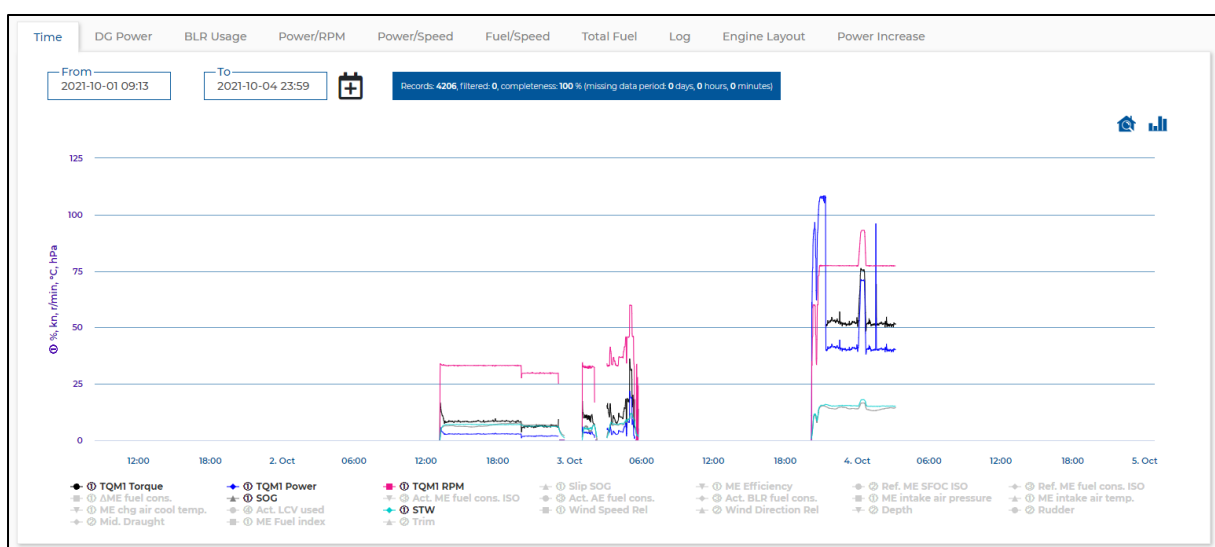
Operational modes

Steady State	<input type="button" value="ON"/> <input checked="" type="button" value="OFF"/>	Underway	<input checked="" type="button" value="TRUE"/> <input type="button" value="FALSE"/>	<input checked="" type="button" value="ON"/> <input type="button" value="OFF"/>
Stopped	<input type="button" value="TRUE"/> <input checked="" type="button" value="FALSE"/>	At anchor	<input type="button" value="TRUE"/> <input checked="" type="button" value="FALSE"/>	<input type="button" value="ON"/> <input checked="" type="button" value="OFF"/>

Other filters

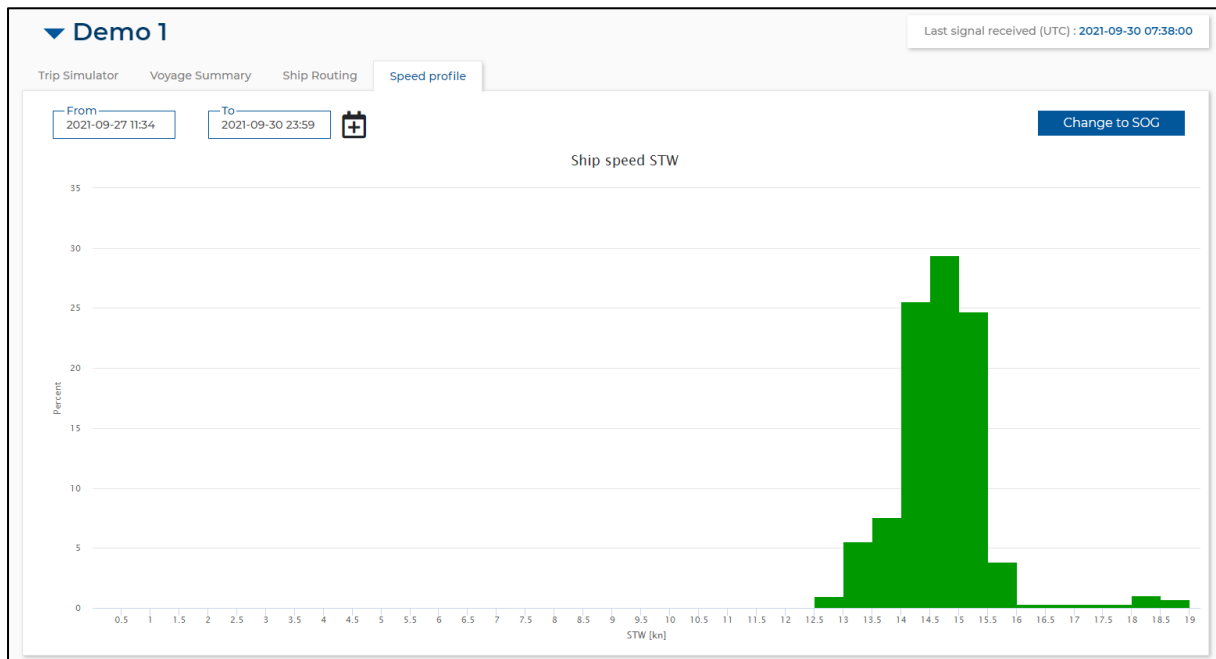
Torque	<input type="text" value="MIN [%] 40"/> <input type="text" value="MAX [%] 50"/>	<input type="button" value="ON"/> <input checked="" type="button" value="OFF"/>	Power	<input type="text" value="MIN [%] 0"/> <input type="text" value="MAX [%] 100"/>	<input type="button" value="ON"/> <input checked="" type="button" value="OFF"/>
RPM	<input type="text" value="MIN [r/min] 80"/> <input type="text" value="MAX [r/min] 100"/>	<input type="button" value="ON"/> <input checked="" type="button" value="OFF"/>	Speed	<input type="text" value="MIN [kn] 0"/> <input type="text" value="MAX [kn] 30"/>	<input type="button" value="ON"/> <input checked="" type="button" value="OFF"/>
Slip	<input type="text" value="MIN [%] 0"/> <input type="text" value="MAX [%] 100"/>	<input type="button" value="ON"/> <input checked="" type="button" value="OFF"/>	Calc. Efficiency	<input type="text" value="MIN [%] 0"/> <input type="text" value="MAX [%] 100"/>	<input type="button" value="ON"/> <input checked="" type="button" value="OFF"/>
Calc. Fuel	<input type="text" value="MIN [kg/h] 0"/> <input type="text" value="MAX [kg/h] 100"/>	<input type="button" value="ON"/> <input checked="" type="button" value="OFF"/>	Calc. SFOC	<input type="text" value="MIN [g/kWh] 0"/> <input type="text" value="MAX [g/kWh] 100"/>	<input type="button" value="ON"/> <input checked="" type="button" value="OFF"/>
Depth	<input type="text" value="MIN [m] 0"/> <input type="text" value="MAX [m] 100"/>	<input type="button" value="ON"/> <input checked="" type="button" value="OFF"/>	Rudder angle	<input type="text" value="MIN [deg] 0"/> <input type="text" value="MAX [deg] 100"/>	<input type="button" value="ON"/> <input checked="" type="button" value="OFF"/>
Wind speed	<input type="text" value="MIN [kn] 0"/> <input type="text" value="MAX [kn] 100"/>	<input type="button" value="ON"/> <input checked="" type="button" value="OFF"/>	Wind dir. relative	<input type="text" value="MIN [deg] 0"/> <input type="text" value="MAX [deg] 100"/>	<input type="button" value="ON"/> <input checked="" type="button" value="OFF"/>
STW	<input type="text" value="MIN [kn] 0"/> <input type="text" value="MAX [kn] 100"/>	<input type="button" value="ON"/> <input checked="" type="button" value="OFF"/>	Mid Draft	<input type="text" value="MIN [m] 0"/> <input type="text" value="MAX [m] 100"/>	<input type="button" value="ON"/> <input checked="" type="button" value="OFF"/>

ETNP Diagnostics



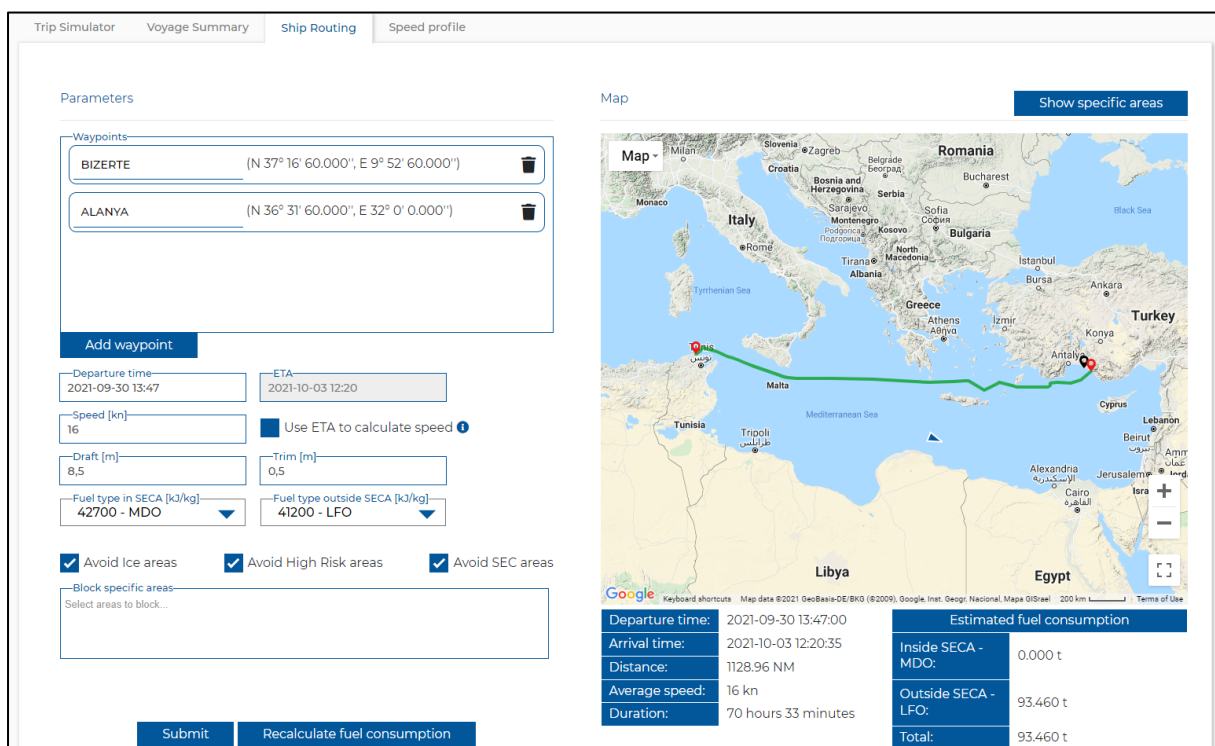
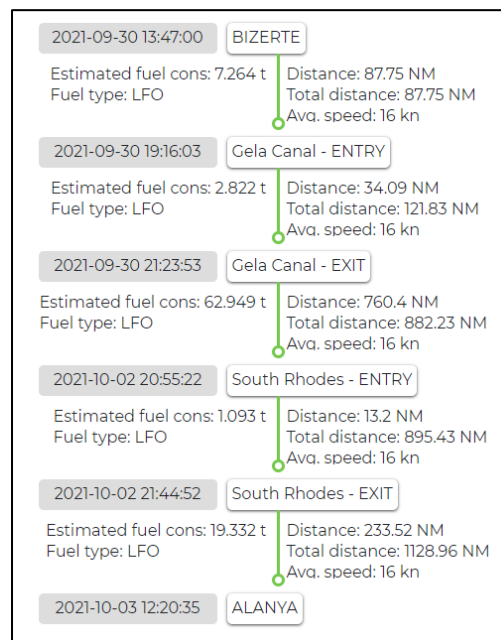
2. Speed profile graph

We've added new graph to the Analysis tab – Speed profile. In this chart we gather all the measurements of the ship speed (STW and SOG separately) and show the percentage of records grouped by 0.5 kn. in relation to all records in the selected period. This helps to quickly analyze in which speeds the vessel is mostly sailing.



3. Route planner – fuel consumption prediction and ETA change

In this release we also added a prediction of fuel consumption for route planner. The user can select the fuel type used normally for the voyage (within and outside of SECA) and predict how much of it will be consumed for the planned route. Fuel consumed prediction will also depend on the parameters of the plan and restrictions for selected route. There is a total fuel consumption prediction available and also a predictions for each leg of the voyage. Additionally there is now ETA input field in the form that allows user to define ETA. The system will then recalculate the speed for each stage of the journey accordingly.

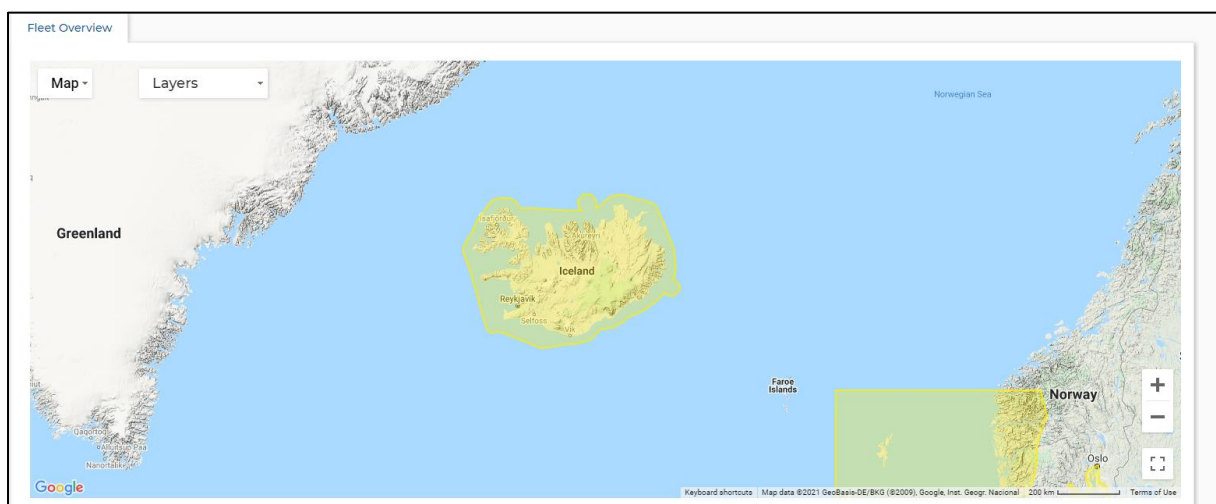


of the signal. Another small change is additional information about unit of value (kW or %) on multiple charts. We've added both units to charts if it was possible in a clear way.



5. New SECA around Iceland

We've updated a list of SECA in our system for Iceland, accordingly to the regulation from Government of Iceland. This is available for maps in the SeaPerformer system via enabling ECA option in the layers menu.



6. Menu changes

In this release we also changed the menu to make the navigation a little bit easier. From now on the user can go directly to any subtab available for him by hovering a mouse cursor over a menu section. The subtabs available for the selected section will be shown below. The user can then click on one of them and go directly to the subtab.

ENAMOR Sp z o.o.

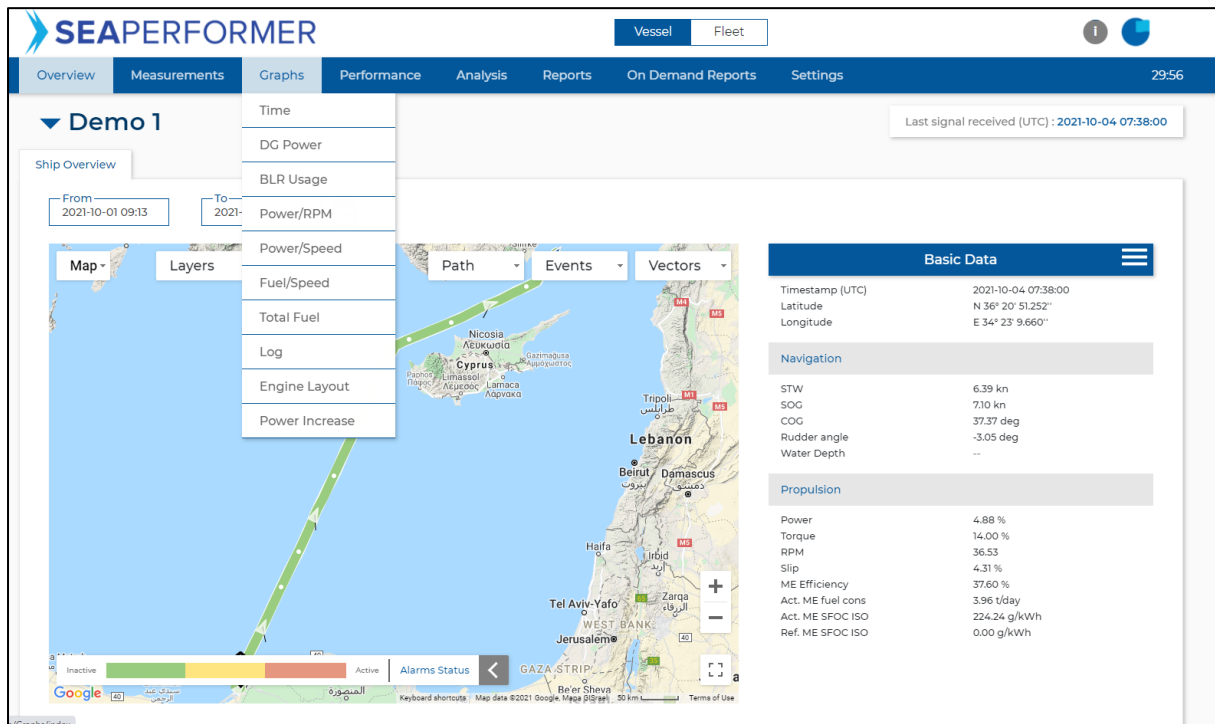
ul. Inżynierska 1 | 81-512 Gdynia | Poland

VAT UE: PL 5860102211 | REGON: 00135874

tel.: +48 58 69 01 700

email: research@enamor.pl

web: www.enamor.pl



7. Troubleshooting

Availability of new features on particular vessel may depend on specific data or signals. Should any of above mentioned features be unavailable for your vessel please contact our support team at support@e-vesseltracker.com.

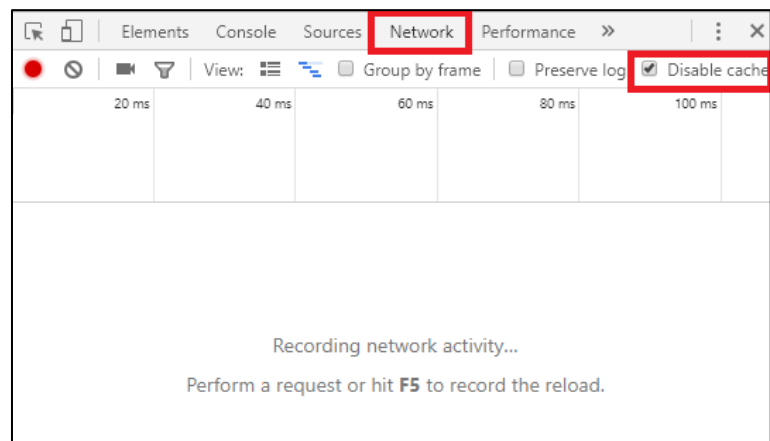
In case of problems with visualization, please try to refresh SeaPerformer site without cached files. Depending on user system:

- **Windows:** SHIFT + F5;
- **Mac/Apple:** Apple + R or command + R;
- **Linux:** F5.

If this doesn't help, try the solutions below:


Chrome browser

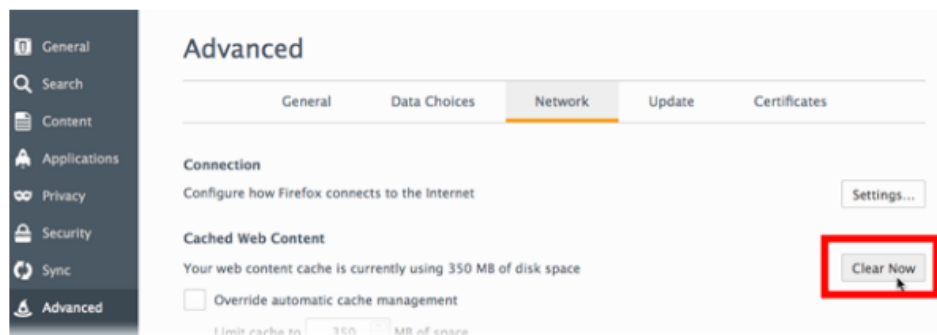
- Click F12 to open developer console;
- Go to Network Tab;
- Make sure that the Disable Cache checkbox is checked;
- Refresh the site with developer console opened.



Firefox browser

Clear the cache

1. Click the menu button  and choose **Options**.
2. Select the **Advanced** panel.
3. Click on the **Network** tab.
4. In the **Cached Web Content** section, click **Clear Now**.



5. Close the `about:preferences` page. Any changes you've made will automatically be saved.