

SeaPerformer Data Monitor Version 1.8 Release Note

SeaPerformer Data Monitor Version 1.8 Release Note

DOCUMENT VERSION 1.1 / 2021-07-08

Main features included in SeaPerformer Data Monitor version 1.8

1. Route planning.....	3
2. Auxiliary Engines Performance loading time decreased	5
3. New tiles in On Demand Report – Grid report	5
4. Troubleshooting	6
<i>Chrome browser</i>	<i>6</i>
<i>Firefox browser</i>	<i>7</i>

1. Route planning

We have enabled route planning in SeaPerformer. User can visualize ship voyage and estimate time of arrival. For this purpose Enamor engages service offered by partner company [Searoutes](#) and integrates it within the SeaPerformer environment. Searoutes is an API first company, they leverage AIS data & modern algorithms to provide powerful routing engines.

SeaPerformer provides dedicated interface for seamless definition of input parameters, calling routing service and presenting results.

User may define departure, arrival and optional mid points of the voyage either with use of port list or directly by clicking the map. Other parameters essential for route selection (e.g. vessel draft) are automatically provided by the SeaPerformer system but may be modified by the user. Route may be also restricted with respect to special zones (piracy, SECA, channels etc.). Definition of routing parameters are fully supported by SeaPerformer interface.

Parameters

Waypoints

TOKYO (N 35° 40' 0.000", E 139° 45' 0.000")

BANGKOK (N 13° 45' 0.000", E 100° 30' 0.000")

Add waypoint

Departure time
2021-07-01 08:57

Speed [kn]
15

Draft [m]

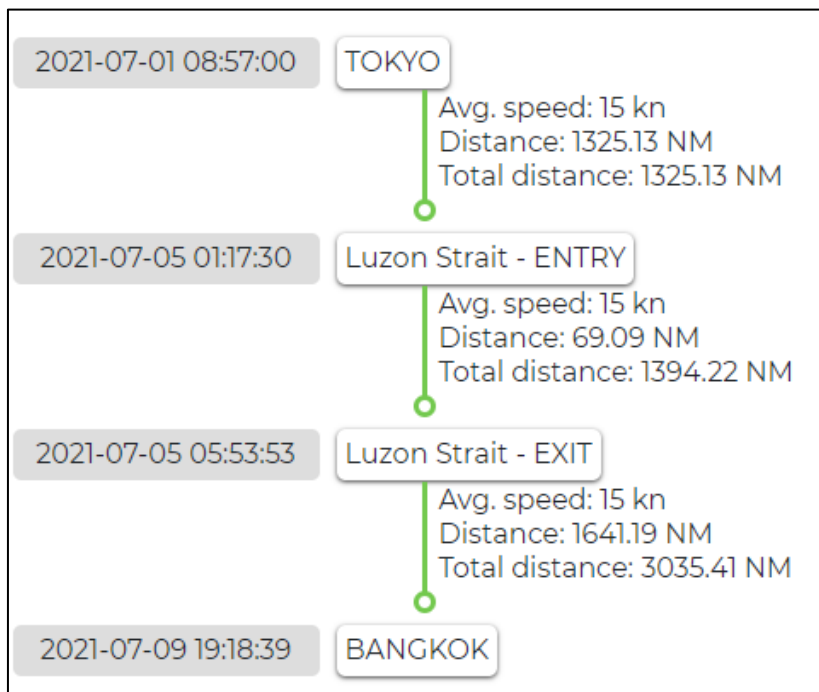
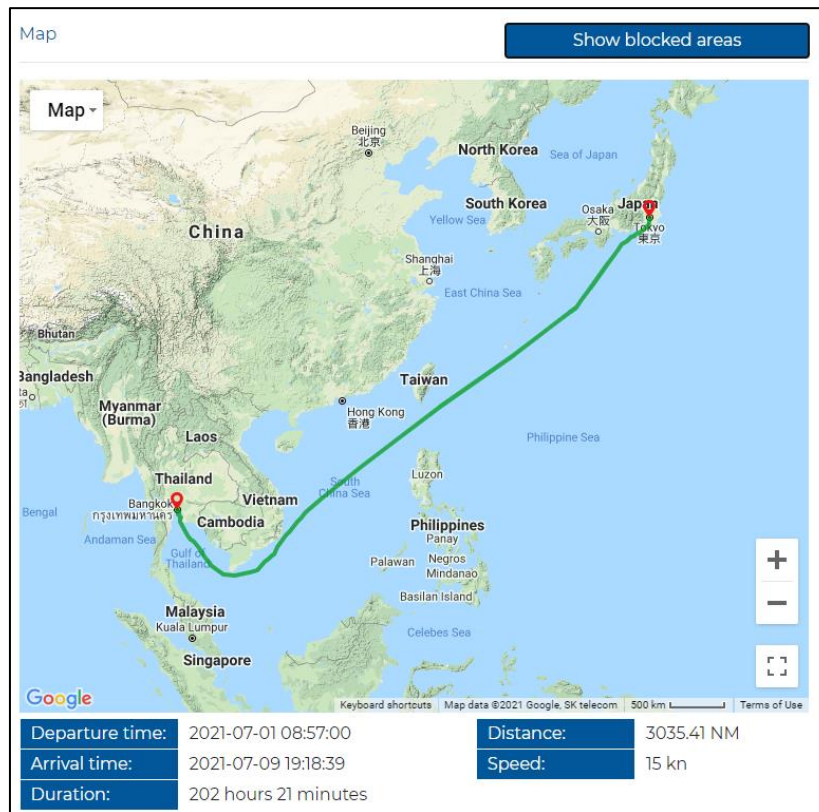
☒ Avoid Ice areas
☒ Avoid High Risk areas
☒ Avoid SEC areas

Avoid blocked areas
South Hainan X

Submit

As soon as input parameters are defined user may request computation of the route. The route is computed based on world's fleet AIS data which are processed taking into account vessel characteristics and route limitations imposed by the user. As the result user obtains the shortest route executed along traffic channels sailed by world fleet in recent years. Routing service employed by SeaPerformer utilizes artificial intelligence methods in order to take advantage of captains vast experience encapsulated in AIS traffic data.

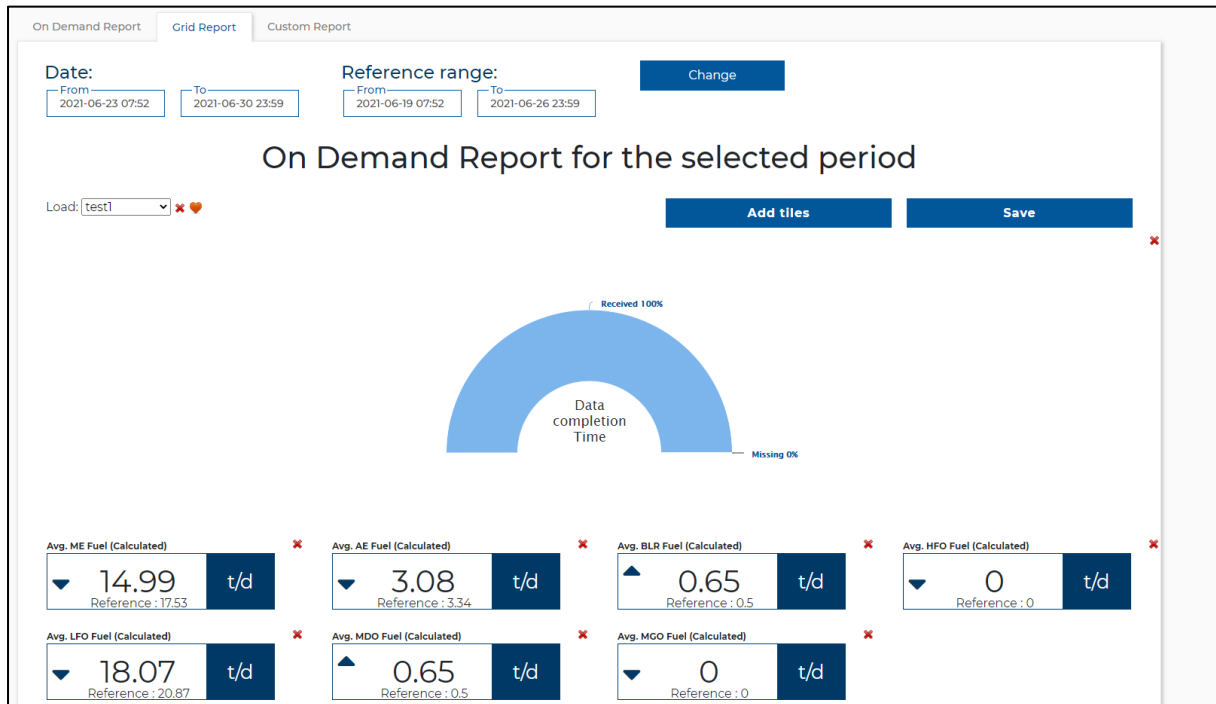
Result of routing service comprises of aggregated information i.e. total distance, voyage duration and estimated time of arrival. Furthermore detailed voyage plan is prepared allowing the user to evaluate each segment of the voyage. Details of the voyage are also presented on the map view.



Vessel routing is available as the optional SeaPerformer subscription service. Users wishing to explore this option may request trial period by contacting Enamor's support team.

2. New tiles in On Demand Report – Grid report

In this release we also added new tiles for ODR – Grid report. The new tiles contain the average values of the fuel consumption, divided by the type of receiver and by the type of fuel. New tiles can be added to existing templates with “Add tiles” button.



3. Auxiliary Engines Performance module optimization

We’ve revised algorithm of the Auxiliary Engines Performance Comparison tab to reduce computation time. Users will need much less time to get the result for this subtab now. We will gradually increase the loading times of other tabs in next releases.

Fleet comparison

ME SFOC

Auxiliary Engines Performance Comparison

From

2021-06-23 07:52

To

2021-06-30 23:59

Change

Selected group:

Demo1

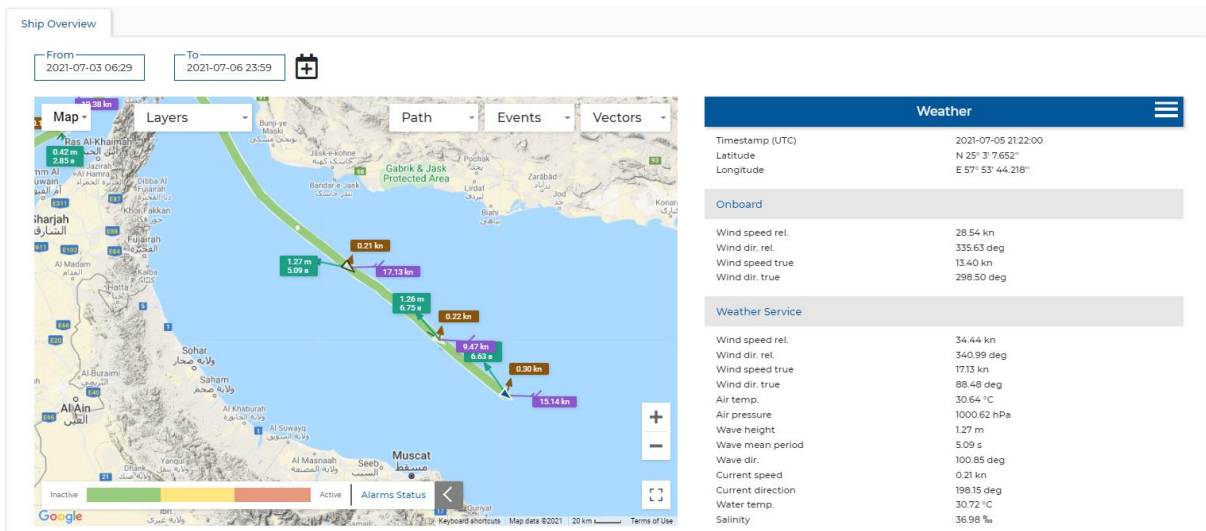
Granularity

Week

			Total				Stopped				Underway			
Period	Ship	Completeness [%]	Aux Energy [kWh]	Working Hours [h]	Avg Aux Load [kW]	Avg Aux No. [-]	Aux Energy [kWh]	Working Hours [h]	Avg Aux Load [kWh]	Avg Aux No. [-]	Aux Energy [kWh]	Working Hours [h]	Avg Aux Load [kW]	Avg Aux No. [-]
W25 June 2021 (from 2021-06-23 07:52)	Demo 1	100.00	93288.1	130.05	733.79	1.09	26917.8	49.62	558.04	1.10	66370.3	80.43	846.20	1.08
	Demo 3	100.00	103797.8	133.75	809.37	1.12	32208.6	46.10	715.59	1.11	71589.2	87.65	855.36	1.13
W26 July 2021 (to 2021-06-30 23:59)	Demo 1	100.00	55825.0	82.78	711.89	1.16	19329.8	33.30	601.18	1.14	36495.2	49.48	781.37	1.18
	Demo 3	100.00	94623.4	134.78	715.33	1.89	21004.6	33.32	685.29	1.56	73618.8	101.47	725.89	2.00

4. Weather data on ship track available again

Weather data interpolation to every minute of vessel operation has been inactive for some time due to changes introduced by our data provider (NOAA). We've updated SeaPerformer code in order to comply with new data schema. This service is available again within this release.



5. Troubleshooting

Availability of new features on particular vessel may depend on specific data or signals. Should any of above mentioned features be unavailable for your vessel please contact our support team at support@e-vesseltracker.com.

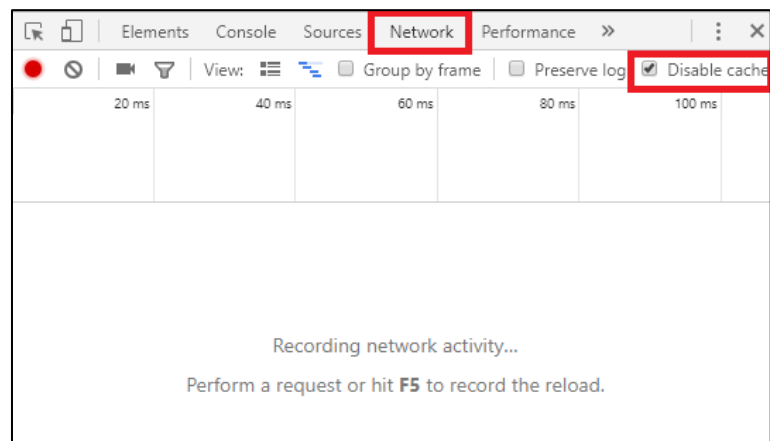
In case of problems with visualization, please try to refresh SeaPerformer site without cached files. Depending on user system:

- **Windows: SHIFT + F5;**
- **Mac/Apple: Apple + R or command + R;**
- **Linux: F5.**

If this doesn't help, try the solutions below:


Chrome browser

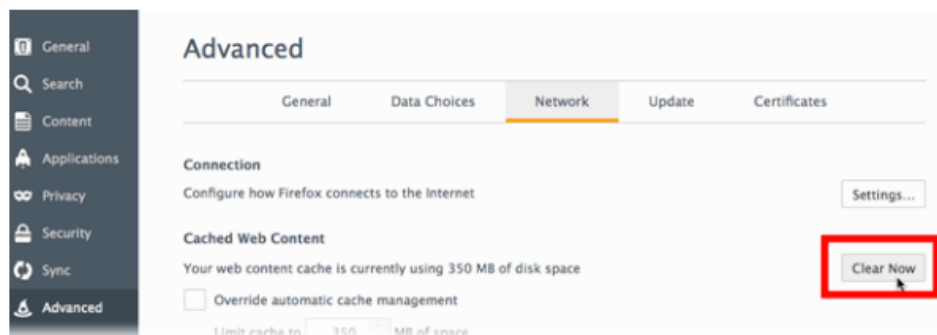
- Click F12 to open developer console;
- Go to Network Tab;
- Make sure that the Disable Cache checkbox is checked;
- Refresh the site with developer console opened.



Firefox browser

Clear the cache

1. Click the menu button  and choose **Options**.
2. Select the **Advanced** panel.
3. Click on the **Network** tab.
4. In the **Cached Web Content** section, click **Clear Now**.



5. Close the `about:preferences` page. Any changes you've made will automatically be saved.