

## SeaPerformer Data Monitor Version 1.14 Release Note

# SeaPerformer Data Monitor Version 1.14 Release Note

DOCUMENT VERSION 1.0 / 2023-04-26

## Main features included in SeaPerformer Data Monitor version 1.14

1. Custom filters in performance graphs, and additional filtering. True wind and direction.....	3
2. New Time Graph signals – true wind and direction .....	3
3. Averaging of series on Time Graph.....	4
4. Power EEXI limit graph .....	4
5. New SECA around Puerto Rico .....	5
6. Custom range alerts.....	6
7. Minor fixes .....	6
8. Troubleshooting .....	6
Chrome browser .....	7
Firefox browser .....	7

**1. Custom filters in performance graphs, and additional filtering. True wind and direction**  
Functionality known from Graphs in Seaperformer as custom filters was also implemented into all Performance pages. This adds the possibility to filter all points using specific rules. In addition, we added Wind speed true and Wind direction true to custom filters, for both performance and graphs pages.

## Custom Filters

---

**Operational modes**

Steady State	<input type="button" value="ON"/> <input checked="" type="button" value="OFF"/>	Underway	<input checked="" type="button" value="TRUE"/> <input type="button" value="FALSE"/>	<input type="button" value="ON"/> <input checked="" type="button" value="OFF"/>
Stopped	<input checked="" type="button" value="TRUE"/> <input type="button" value="FALSE"/>	At anchor	<input type="button" value="TRUE"/> <input checked="" type="button" value="FALSE"/>	<input type="button" value="ON"/> <input checked="" type="button" value="OFF"/>

---

**Other filters**

Torque	<input type="text" value="MIN [k] 0"/> <input type="text" value="MAX [k] 120"/>	<input type="button" value="ON"/> <input checked="" type="button" value="OFF"/>	Power	<input type="text" value="MIN [k] 0"/> <input type="text" value="MAX [k] 100"/>	<input type="button" value="ON"/> <input checked="" type="button" value="OFF"/>
RPM	<input type="text" value="MIN [r/min] 0"/> <input type="text" value="MAX [r/min] 75"/>	<input type="button" value="ON"/> <input checked="" type="button" value="OFF"/>	Speed	<input type="text" value="MIN [kn] 0"/> <input type="text" value="MAX [kn] 30"/>	<input type="button" value="ON"/> <input checked="" type="button" value="OFF"/>
Slip	<input type="text" value="MIN [%] 0"/> <input type="text" value="MAX [%] 100"/>	<input type="button" value="ON"/> <input checked="" type="button" value="OFF"/>	Calc. Efficiency	<input type="text" value="MIN [%] 0"/> <input type="text" value="MAX [%] 39"/>	<input type="button" value="ON"/> <input checked="" type="button" value="OFF"/>
Calc. Fuel	<input type="text" value="MIN [kg/h] 0"/> <input type="text" value="MAX [kg/h] 100"/>	<input type="button" value="ON"/> <input checked="" type="button" value="OFF"/>	Calc. SFOC	<input type="text" value="MIN [g/kWh] 0"/> <input type="text" value="MAX [g/kWh] 100"/>	<input type="button" value="ON"/> <input checked="" type="button" value="OFF"/>
Depth	<input type="text" value="MIN [m] 0"/> <input type="text" value="MAX [m] 100"/>	<input type="button" value="ON"/> <input checked="" type="button" value="OFF"/>	Rudder angle	<input type="text" value="MIN [deg] 0"/> <input type="text" value="MAX [deg] 100"/>	<input type="button" value="ON"/> <input checked="" type="button" value="OFF"/>
Wind speed relative	<input type="text" value="MIN [kn] 0"/> <input type="text" value="MAX [kn] 100"/>	<input type="button" value="ON"/> <input checked="" type="button" value="OFF"/>	Wind dir. relative	<input type="text" value="MIN [deg] 0"/> <input type="text" value="MAX [deg] 100"/>	<input type="button" value="ON"/> <input checked="" type="button" value="OFF"/>
Wind speed true	<input type="text" value="MIN [kn] 0"/> <input type="text" value="MAX [kn] 100"/>	<input type="button" value="ON"/> <input checked="" type="button" value="OFF"/>	Wind dir. true	<input type="text" value="MIN [deg] 0"/> <input type="text" value="MAX [deg] 100"/>	<input type="button" value="ON"/> <input checked="" type="button" value="OFF"/>
STW	<input type="text" value="MIN [kn] 0"/> <input type="text" value="MAX [kn] 100"/>	<input type="button" value="ON"/> <input checked="" type="button" value="OFF"/>	Mid Draft	<input type="text" value="MIN [m] 0"/> <input type="text" value="MAX [m] 100"/>	<input type="button" value="ON"/> <input checked="" type="button" value="OFF"/>

---

ETNP Diagnostics

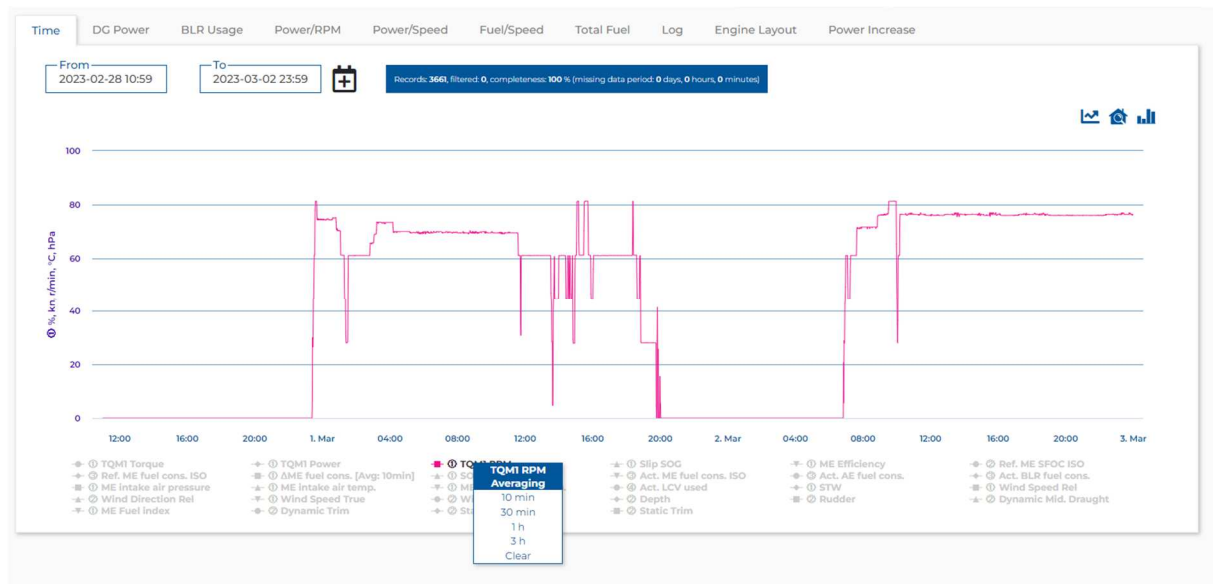
## 2. New Time Graph signals – true wind and direction

We added two new signals to the Time graph which are wind speed true and wind direction true.



### 3. Averaging of series on Time Graph

We introduced the possibility to set an averaging window for each serie on time graph. After right clicking on the serie name in graph legend, it is possible to select the size of the window in which signal should be averaged.



After selecting one of the options, graph will be reloaded and selected serie will be averaged (also shown in the signal name in graph legend)



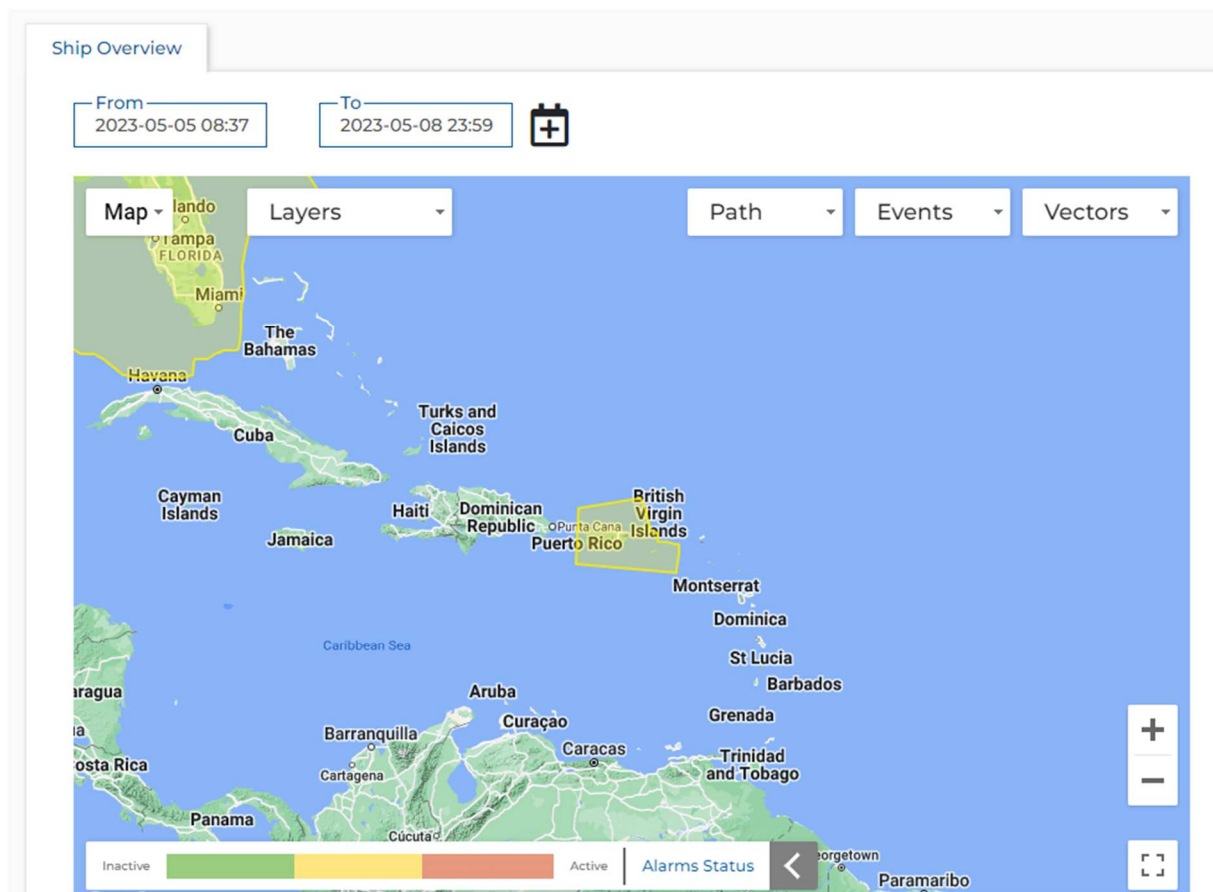
### 4. Power EEXI limit graph

In this release we also introduce a graph for vessels featuring power limitation according to IMO EEXI rules. Graph shows ME power in time, and also the EEXI limit which was set on the vessel. In case of the exceeding the limit, we introduced a new alert which will be visible in several places through the application, as well as time period of the exceeding will be marked on the EEXI limit graph.



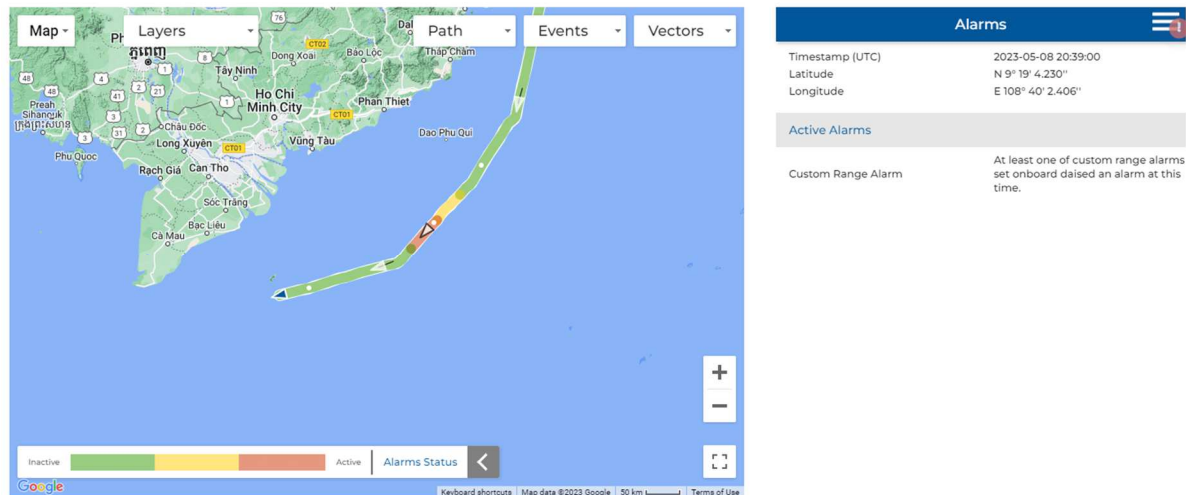
## 5. New SECA around Puerto Rico

We added new SECA surrounding Puerto Rico



## 6. Custom range alerts

As we introduced new ways to customize raised alerts onboard with SPDA software, we also added a new type of alert in Seaperformer allowing to display them. We plan to work more around this feature to deliver additional information based on configuration set on the vessel.



## 7. Minor fixes

This point contains some minor improvements in the user interface of the application as well as some fixes. These are related to charts clarity, simplification of views and internal data processing optimization. Each new version of the application contains some corrections and improvements thanks to the feedback from the users and internal tests. This release contains the following fixes or improvements:

- Wrong GPS signals fix on route map
- Manual inputs fixes in PDF
- Multiple visual improvements trough whole application
- Tweaks in CII graph
- Added SPDA integration
- Total fuel Pie chart fixes

## 8. Troubleshooting

Availability of new features on a particular vessel may depend on specific data or signals. Should any of above-mentioned features be unavailable for your vessel please contact our support team at [coordination@enamor.pl](mailto:coordination@enamor.pl).

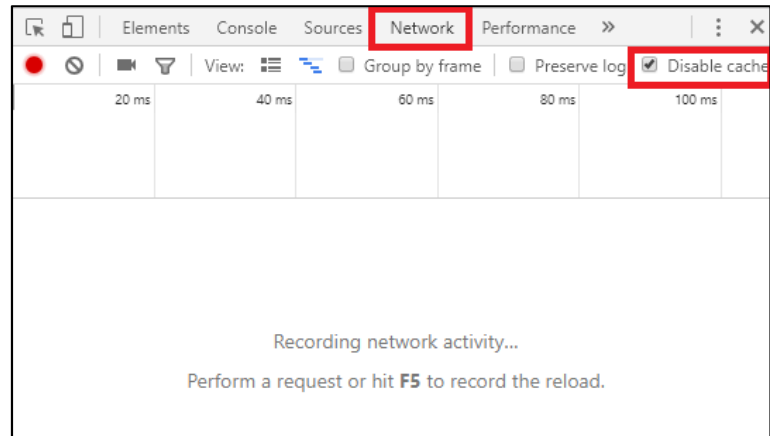
In case of problems with visualization, please try to refresh SeaPerformer site without cached files. Depending on user system:

- **Windows:** SHIFT + F5;
- **Mac/Apple:** Apple + R or command + R;
- **Linux:** F5.

If this doesn't help, try the solutions below:


#### Chrome browser

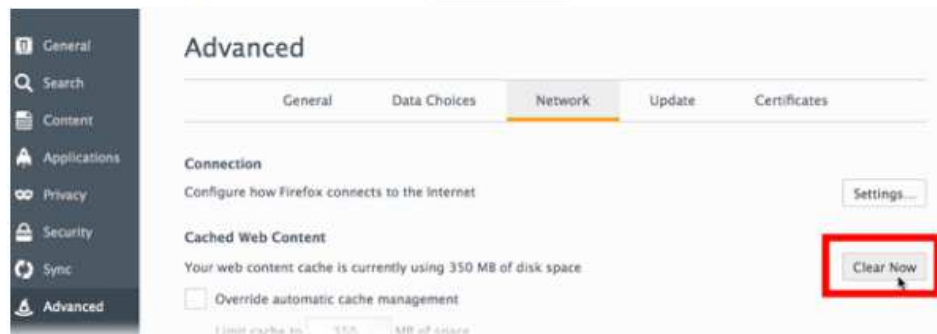
- Click F12 to open developer console;
- Go to Network Tab;
- Make sure that the Disable Cache checkbox is checked;
- Refresh the site with developer console opened.



#### Firefox browser

### Clear the cache

1. Click the menu button  and choose **Options**.
2. Select the **Advanced** panel.
3. Click on the **Network** tab.
4. In the **Cached Web Content** section, click **Clear Now**.



5. Close the `about:preferences` page. Any changes you've made will automatically be saved.